



INTERNATIONAL PARTNERSHIP  
FOR THE SATOYAMA INITIATIVE


---

**2022 ANNUAL REPORT**



SATOYAMA  
INITIATIVE





## International Partnership for the Satoyama Initiative 2022 Annual Report

Published: October 2023

This publication should be cited as:

IPSI Secretariat (2023). International Partnership for the Satoyama Initiative: 2022 Annual Report. United Nations University Institute for the Advanced Study of Sustainability. Tokyo.

Designed by: Secretariat of the IPSI Partnership for the Satoyama Initiative

© United Nations University 2023

Published by:  
United Nations University Institute for the Advanced Study of Sustainability (UNU-IAS)  
5-53-70 Jingumae  
Shibuya-ku, Tokyo 150-8925, Japan  
Email: [isi@unu.edu](mailto:isi@unu.edu)  
Web: <http://satoyama-initiative.org>

The designations employed and the presentation of material throughout the publication do not imply the expression of any opinion whatsoever on the part of UNU-IAS concerning the legal status of any country, territory, city or area or of its authorities, or, concerning its frontiers or boundaries.

The contributing authors are responsible for the choice and presentation of the facts contained in this document and for the opinions expressed therein, which are not necessarily those of UNU or UNU-IAS and do not commit either the University or the Institute.

### Photo credit:

Front cover by Hu Chen on Unsplash.  
Interior cover by Victor on Unsplash.  
Back cover by Ricardo Gomez Angel on Unsplash.





# INTERNATIONAL PARTNERSHIP FOR THE **SATOYAMA INITIATIVE**

---

## TABLE OF CONTENTS

---

### **FOREWORD**

<b>Message from the IPSI Director</b>	4
---------------------------------------	---

### **2021 ANNUAL REPORT**

<b>Overview</b>	6
<b>Partnership</b>	7
<b>Event Highlights</b>	8
<b>Collaborative Activities</b>	10
<b>Knowledge Product Highlights</b>	13
<b>IPSI Steering Committee and Secretariat</b>	17

### **ANNEX**

<b>List of IPSI Members as of March 2022</b>	18
<b>Events History</b>	26

---

## MESSAGE FROM IPSI DIRECTOR

---



The year 2023 marks an exciting new phase for the International Partnership for the Satoyama Initiative (IPSI). The adoption of the Kunming-Montreal Global Biodiversity Framework (GBF) in December 2022 presents us with opportunities to enhance IPSI's impact on a global scale. The GBF has set forth four overarching goals to be achieved by 2050, focusing on ecosystem and species health—including halting human-induced species extinction—, promoting sustainable use of biodiversity, ensuring equitable sharing of benefits, and addressing implementation and finance –including closing the biodiversity finance gap of \$700 billion per year.

The GBF also outlined 23 targets to accomplish by 2030, including conserving 30% of land and sea, restoring 30% of degraded ecosystems, reducing invasive species introduction by half, and a \$500 billion per year reduction in harmful subsidies.

Over the past 12 years, IPSI has gained valuable knowledge and experience supporting diverse organisations in their efforts towards sustainable production landscapes and seascapes and biodiversity conservation. Socio-ecological production landscapes and seascapes (SEPLS) have demonstrated their close connection to conservation, sustainable use, and restoration of terrestrial, coastal,

and marine areas, contributing to food and water security, climate change mitigation and adaptation, disaster risk reduction, and socio-economic development of local communities.

This year, IPSI will also publish a new Strategy and Plan of Action that will facilitate interdisciplinary cooperation, capacity-building, and resource mobilisation to contribute to the GBF and the United Nations Decade on Ecosystem Restoration. Priority actions will include developing knowledge products, integrating landscape and seascape approaches into policies, contributing to area-based conservation efforts, and promoting SEPLS for ecosystem restoration and circular economies.

With a dynamic network of partners worldwide, IPSI is moving forward, raising awareness of landscape approaches. By 2030, we anticipate that landscape approaches will flourish, and protected biodiversity will provide numerous benefits for humankind.

I eagerly anticipate working with all of you to further develop IPSI's activities towards "living in harmony with nature" in the coming decade.

DR TSUNAO WATANABE

*Director of the Secretariat  
International Partnership for the Satoyama Initiative*









Credit: Convention on Biological Diversity

## OVERVIEW

### April 2022 - March 2023

The 2022 fiscal year (April 2022 – March 2023) marked the twelfth full year since the launch of IPSI in October 2010, with a membership growth to 298 organisations. IPSI, in pursuit of the Satoyama Initiative's vision of "societies in harmony with nature," engaged in various activities across regions worldwide.

A significant event was the Convention on Biological Diversity's fifteenth Conference of the Parties (CBD COP-15) in December 2022, where the post-2020 global biodiversity framework, known as the Kunming-Montreal Global Biodiversity Framework (GBF), was adopted. IPSI actively raised awareness of landscape approaches and the multiple benefits of Socio-Ecological Production Landscapes and Seascapes (SEPLS) for biodiversity conservation and sustainability during the GBF development process.

IPSI also participated in and organized events throughout the year, such as the International Day for Biological Diversity 2022 Symposium, a side event at the UN High Level Political Forum on Sustainable Development (HLPF) 2022, and the International Forum for Sustainable Asia and the Pacific (ISAP) 2022 Thematic Track Session. In June 2022, the seventh volume of the "Satoyama Initiative Thematic Review" on the Biodiversity-Health-Sustainability

Nexus in SEPLS was published, contributing to the growing body of knowledge on landscape approaches and international processes like IPBES.

The IPSI Steering Committee had three meetings, one in June 2022 and two in February 2023. The June 2022 meeting was email-based, and the February 2023 meetings were held virtually. The subcommittee established to update the IPSI Strategy and Plan of Action had its final meeting in October 2022.

As always, we the IPSI Secretariat at the United Nations University Institute for the Advanced Study of Sustainability (UNU-IAS) in Tokyo, Japan would like to thank all IPSI member organisations and everyone else who has contributed to the continuing success of the partnership, with particular appreciation to the Ministry of the Environment, Government of Japan (MOEJ) for their financial support for IPSI's core activities.

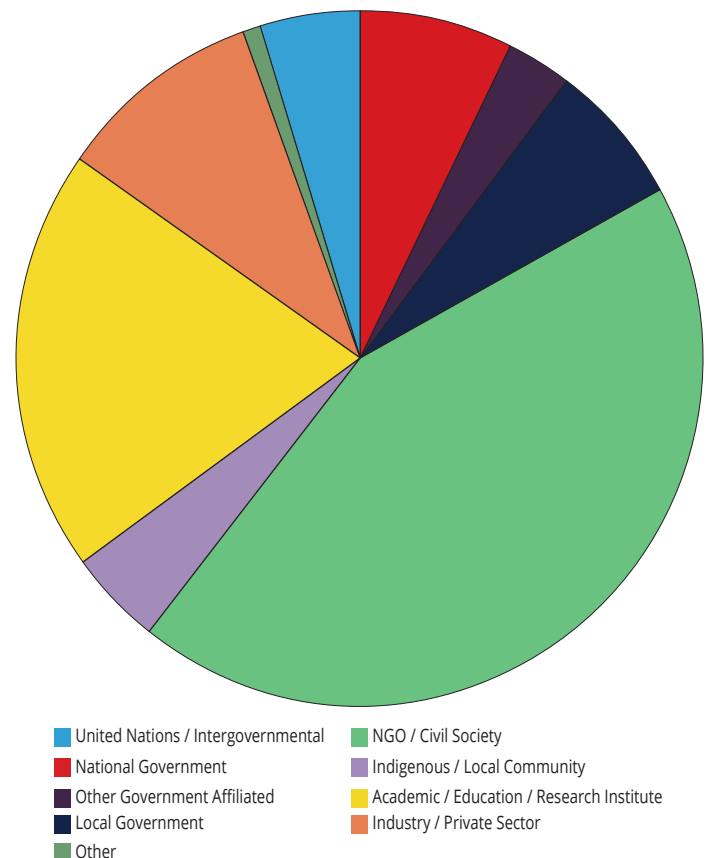


## PARTNERSHIP

IPSI welcomed 15 new members, bringing the total number of member organisations to 298 by the end of the fiscal year 2022. The new members from this year are:

- **Akita International University (AIU)** (Academic, Educational and/or Research Institute, Japan)
- **Akita Satoyama Design LLC** (Industry or private sector organization, Japan)
- **Department of Integrated Science and Engineering for Sustainable Societies, Faculty of Science and Engineering, Chuo University** (Academic, Educational and/or Research Institute, Japan)
- **Global Youth Biodiversity Network** (Non-governmental or civil society organisation, Germany)
- **Green Movement of Sri Lanka Inc.** (Non-governmental or civil society organisation, Sri Lanka)
- **International Land Conservation Network (ILCN)** (Academic, Educational and/or Research Institute, USA)
- **Manna Rural Living Experimental Hub** (Non-governmental or civil society organisation, Chinese Taipei)
- **Mauritania Wildlife Foundation** (Non-governmental or civil society organisation, Mauritius)
- **Miaoli County Saisiyat Indigenous People Forestry and Worker LLC** (Non-governmental or civil society organisation, Chinese Taipei)
- **Node Creative Company** (Industry or private sector organization, Chinese Taipei)
- **Pastoralist Economic & Social Advancement (PESA)** (Non-governmental or civil society organisation, Tanzania)
- **Secretariat do Infrastructure and Environment - Sao Paulo State Government (SIMA-SP)** (Local governmental organization, Brazil)
- **Taoyuan City Government** (Local governmental organization, Chinese Taipei)
- **Union of Community Development Volunteers** (Non-governmental or civil society organisation, Uganda)
- **Yilan County Government** (Local governmental organisation, Chinese Taipei)

IPSI Members by Type of Organisation



We are proud to see IPSI's representation strengthen and expand in all regions of the world. IPSI continues to expand its membership among some under-represented types of organisations, such as indigenous peoples' and local community groups, and private sector organisations. For the full list of current IPSI members, please go to the official IPSI website, [satoyama-initiative.org](https://satoyama-initiative.org).



---

## EVENT HIGHLIGHTS

---

IPSI's diverse membership, as always, continues to be involved in many events around the world. Below is a list of events specifically organized on behalf of IPSI or were otherwise particularly relevant to the partnership.

### Biodiversity Day Symposium

*20 May 2022:* The symposium celebrated conservation efforts from around the world for the International Day for Biological Diversity. Focused on this year's theme "building a shared future for all", the event explored local actions aligned with the international policy agenda. The event was organised in partnership with the Ministry of the Environment Japan (MOEJ), the Global Environment Outreach Centre (GEOC), and UNU-IAS, with the support of the Japan Conference for 2030 Global Biodiversity Framework (J-GBF). For details about the event go [here](#).



### IPSI Case Study Workshop 2022

*30 May - 1 June 2022:* This workshop was held online as part of the process towards publishing the Satoyama Initiative Thematic Review Volume 8 (SITR-8). The theme of the book and the workshop is "Ecosystem Restoration through managing socio-ecological production landscapes and seascapes (SEPLS)", contributing to the UN Decade on Ecosystem Restoration. This volume highlights how the efforts in managing SEPLS can prevent, halt, and reverse land and sea degradation, contributing to ecosystem restoration and sustainable development. Selected authors, who are IPSI members, shared their case studies and received feedback on their manuscripts from their peers for further improvement. Participants exchanged views on how landscape approaches, which underpin the management of SEPLS, can facilitate ecosystem restoration in an integrated manner by rendering area-based multi-stakeholder strategies to balance conservation and development objectives. Discussion sessions led to the development of key messages and later to the Synthesis chapter.

SITR-8 will be published in August 2023 by Springer Nature Publishing.

### UN High-Level Political Forum on Sustainable Development (HLPF) Side Event on the Satoyama Initiative

*13 July 2022:* This online side event titled "Partnership in action for well-being: the Satoyama Initiative and building back better" explored the role of the Satoyama Initiative in achieving the SDGs and recovering from the COVID-19 pandemic. Speakers emphasised the need for integrated approaches based on a harmonious relationship with nature to create lasting solutions to the challenges of climate change and promote well-being. The event was co-organised by Conservation International; UNU-IAS; United Nations Development Programme (UNDP); the Secretariat of the Convention on Biological Diversity (SCBD); and MOEJ. For details about the event, see [here](#).

### Third Global Conference on Strengthening Synergies Between the Paris Agreement on Climate Change and the 2030 Agenda for Sustainable Development Side Event on Ecosystem Restoration

*20 July 2022:* This side event titled "Catalysing Nature-based Solutions for Biodiversity, Climate Change and Sustainable Development through Ecosystem Restoration" was jointly organised by UNU-IAS, the Food and Agriculture Organization of the United Nations (FAO), and SCBD. Participants discussed the potential of ecosystem restoration as a nature-based solution to address challenges of biodiversity, climate change, and sustainable development. More details about the event [here](#).



Credit: UNU-IAS



## International Forum for Sustainable Asia and the Pacific (ISAP) 2022 Thematic Track Session on the Satoyama Initiative:

14 December 2022: The session titled, “*Transformative Actions for Nature-positive Society from SATOYAMA Initiative Towards 2030*” was held online as a Thematic Track Session of ISAP 2022 in partnership with UNU-IAS and the Institute for Global Environmental Strategies (IGES). The session discussed the Satoyama Development Mechanism (SDM), go to page 11, where IPSI members presented two case studies of SDM projects in Asia. The projects fostered local economies, sustainable production and consumption, and biodiversity conservation. For more information, see [here](#).

## UN Biodiversity Conference: Fifteenth Meeting of the Conference of the Parties (COP-15) to the Convention on Biological Diversity (CBD)



**2020 UN BIODIVERSITY CONFERENCE**  
**COP 15 - CP/MOP 10 - NP/MOP 4**  
Ecological Civilization-Building a Shared Future for All Life on Earth  
KUNMING – MONTREAL

7-19 December 2022: The IPSI Secretariat was in Montreal for the UN Biodiversity Conference (CBD COP15) on 7–19 December 2022. It concluded with the adoption of the [Kunming-Montreal Global Biodiversity Framework \(GBF\)](#), a historic agreement to conserve 30% of the world’s land and sea, take urgent action on extinctions, and restore degraded ecosystems by 2030.

Through a series of side events and expert contributions, the IPSI Secretariat advanced crucial discussions on the post-2020 global biodiversity framework and transforming humanity’s relationship with the natural world. These contributions showcased the UNU-IAS’s latest research and policy recommendations as well as IPSI activities.

The IPSI Secretariat organised four side events at COP-15:

- 7 December 2022: [The Satoyama Initiative: A Decade of Working for Societies in Harmony with Nature](#). The event was co-organised by UNU-IAS; MOEJ; IGES; UNDP; SCBD, and the Asian Development Bank.
- 8 December 2022: [OECDs and Green Economies: Productive Landscapes for Nature-positive Society](#). The event was a session at the Nature Positive Pavilion and was co-organised by UNU-IAS and Conservation International.



Credit: IPSI Secretariat

- 8 December 2022: [Exploring Nature-positive Pathways](#). The event was co-organised by the Netherlands Environmental Assessment Agency (PBL); ICLEI – Local Governments for Sustainability (ICLEI); Capitals Coalition; UNU-IAS; and the Institute for Sustainable Development and International Relations (IDDRI).
- 14 December 2022: [Nature-based Solutions to Climate Change and Other Social Challenges by Conservation and Restoration of Mangrove Ecosystem, Focusing on its Multiple Services](#). The event was co-organised by the Japan International Cooperation Agency (JICA); the Ministry of Environment and Forestry, Indonesia; MOEJ; the SCBD; and UNU-IAS.
- 16 December 2022: [COMDEKS Phase 4: Contribution of the Satoyama Initiative to the Post-2020 Global Biodiversity Framework](#). The event was co-organised by the UNDP; Global Environment Facility (GEF); GEF Small Grants Programme (GEF-SGP), MOEJ; the SCBD; and UNU-IAS.

The IPSI Secretariat also participated in two sessions of the Nature and Culture Summit held on 11-12 December 2022 as part of the UN Biodiversity Conference.

- Actions on Science and Knowledge Dialogue, and Biocultural Indicators. This session discussed the importance of promoting exchanges between scientific and traditional knowledge systems, values, experiences, methods, and results relevant for the conservation and sustainable use of biological diversity.
- New Approaches to Communication, Education and Public Awareness. This session explored inspirational action to raise awareness of the interlinkages between biological and cultural diversity across all sectors.



---

## COLLABORATIVE ACTIVITIES UPDATES

---

IPSI endorsed five new collaborative activities, bringing the total number to 60, of which 26 have been reported as successfully completed. The newly endorsed activities, listed in order of submission, are:

### [Building Climate Resilient Socio Ecological Production Landscapes \(SEPLs\) in India](#)

M. S. Swaminathan Research Foundation-Community Agro-biodiversity Centre (MSSRF), Tropical Institute of Ecological Sciences, Kottayam, Kerala, Departments of Plant Science and Zoology, Mananthavady campus, Kannur University

### [Flying Vets Mongolia](#)

The International Council for Game and Wildlife Conservation (CIC), Ministry of Environment and Tourism of Mongolia, World Organization for Animal Health (WOAH), Wildlife Conservation Society (WCS)

### [Making OECMs Work: Landscape Approaches for Effective Area-Based Conservation](#)

Conservation International Japan and UNU-IAS.

### [Mutual learning or resilience of SEPLs through restoring rural landscapes in Japan](#)

Akita Satoyama Design, Akita International University, Conservation International, Akita Prefecture, Oga City, people with knowledge and expertise in and around Oga City

### [Strengthening National Biodiversity and Forest Carbon Stock Conservation through Landscape-based Collaborative Management of Cambodia's Protected Area System as Demonstrated in the Eastern Plains Landscape \(CAMPAS\)](#)

Ministry of Environment, Cambodia, Institute of Environmental Rehabilitation and Conservation (ERECON), BirdLife, Live & Learn, WWF and Wildlife Conservation Society (WCS), General Secretariat of the National Council for Sustainable Development (GSSD), General Directorate of Administration for Nature Conservation and Protection (GDANCP), and General Directorate of Local Community (GDLC)



Credit: Boudewijn Huysmans/Unsplash



The **Satoyama Development Mechanism (SDM)** administered its ninth round of funding in 2022, providing seed funding to five SEPLS-related projects around the world. In light of the global momentum towards 2030 and beyond, the SDM framework was renewed to better support SEPLS projects. The new modality included changes to the amount of funds projects could receive, priority to projects aligning with themes of the Kunming-Montreal Global Biodiversity Framework—other effective area-based conservation measures (OECMs), landscape or seascape restoration, conservation and collaboration with indigenous peoples and local communities, resilience enhancement, and sustainable food or material production—and recipients will be invited to participate in two online workshops, an inception workshop and a project completion workshop.

SDM sub-grant recipients selected in 2022:

- **Ethiopian Biodiversity Institute** (National governmental organisation, Ethiopia)  
[“Restoration and conservation of globally endangered \*Cordeauxia edulis\* woody species in the drylands of Ethiopia’s Somali Region”](#)
- **Tse-Xin Organic Agriculture Foundation** (NGO or civil society organisation, Chinese Taipei)  
[“Inheritance and application of Satoyama farming knowledge in Nan’an tribe”](#)
- **Fundación Semillas de Vida, A.C.** (NGO or civil society organisation, Mexico)  
[“Fomenting the SEPL milpa \(three sisters\) through in situ landrace maize seed protection”](#)
- **Social Policy Ecology Research Institute** (NGO or civil society organisation, Vietnam)  
[“Mixed species farming and restoration through support for local indigenous stakeholders”](#)
- **Unnayan Onneshan** (Academic, educational and/or research institute, Bangladesh)  
[“Indigenous and ecosystem-based solutions in SEPLS management during overlapping crises in the Sundarbans, Bangladesh”](#)

Since its establishment in 2013, the SDM has supported 54 projects in 25 countries and regions across the world.

For further details including call for application and project selection information are available on the [SDM website](#). For past and current SDM projects, see [here](#).



• Selected SDM Projects 2022



## The Community Development and Knowledge Management for the Satoyama Initiative (COMDEKS)

The Community Development and Knowledge Management for the Satoyama Initiative (COMDEKS) was launched in 2011 as a flagship of the IPSI. COMDEKS project is a unique global programme, funded by the Japan Biodiversity Fund, implemented by UNDP, in partnership with the MOEJ, SCBD, and UNU-IAS.

COMDEKS has been designed to be community driven. It supports local community activities to maintain and rebuild SEPLS. Working through the Global Environmental Facility Small Grants Programme (GEF-SGP), COMDEKS provides small grants to local community organisations to develop sound biodiversity management and sustainable livelihood activities in order to maintain, rebuild, and revitalize SEPLS. The project collects and distributes knowledge and experiences from successful on-the-ground actions for replication and upscaling in other parts of the world.

COMDEKS grant making is expected to generate key lessons on community-based best practices to maintain and rebuild SEPLS toward the realization of “societies in harmony with nature”, as defined as the vision of the Satoyama Initiative.

At COP15, partners announced the launch of the fourth phase of COMDEKS with funding to total an expected one billion Japanese Yen across six years, with the support of MOEJ and the Keidanren Committee on Nature Conservation (KCNC). Phase 4 will support relevant community-based initiatives and upscale the work in about 20 developing countries during the period of 2023 to 2028.

*Credit: IPSI Secretariat*



Descriptions of these IPSI Collaborative Activities, proposal forms, and reports of completed activities can be found on the IPSI website Collaborative Activities page [here](#).



# KNOWLEDGE PRODUCT HIGHLIGHTS

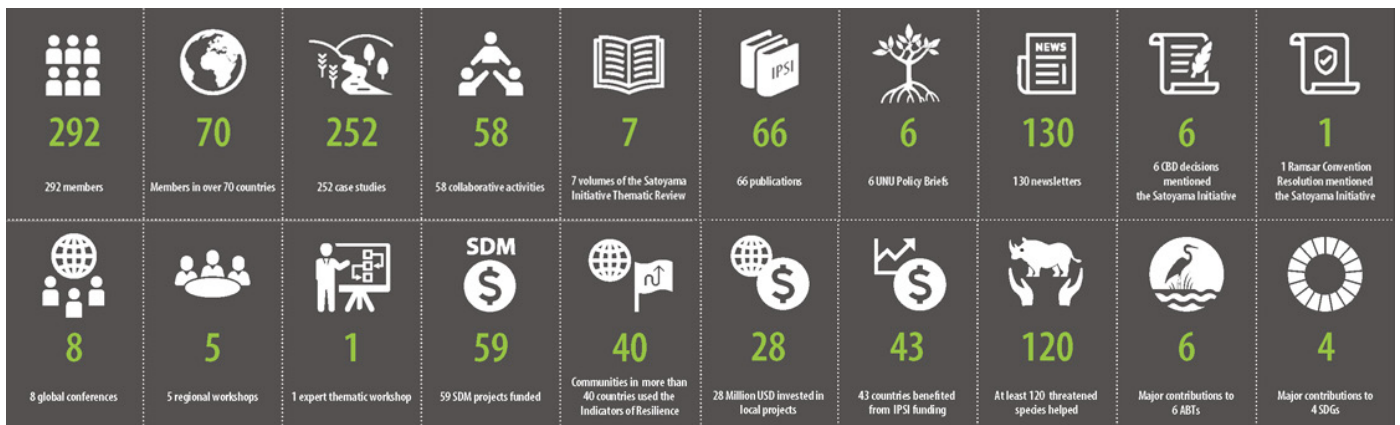
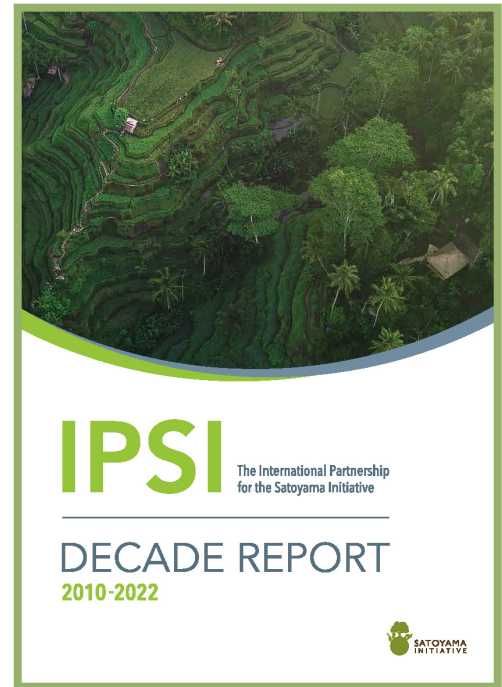
IPSI and its members produced a large number of publications and other knowledge products related to furthering knowledge related to SEPLS during the year. A few highlights were:

## The International Partnership for the Satoyama Initiative: Decade Report 2010-2022

The report commemorates IPSI's first decade since its creation in 2010 at the UN Biodiversity Conference in Nagoya, Japan. It outlines the impact and scope of 252 case studies on socio-ecological production landscapes and seascapes (SEPLS) and 58 collaborative activities implemented by IPSI members since 2010. These have provided rich and diverse research findings, advancing understanding of how SEPLS contribute to food and water security, climate change mitigation and adaptation, disaster risk reduction, health, and socio-economic development of local communities.

In addition, the report details how IPSI has contributed to conserving and understanding the multiple values and importance of local and indigenous traditions, as well as culture for the sustainable use of SEPLS. It explores the implications of the COVID-19 pandemic, including how SEPLS were impacted and the relevant benefits they provide for human health and well-being.

The report is available online at the IPSI website. Please go [here](#).





## Satoyama Initiative Thematic Review

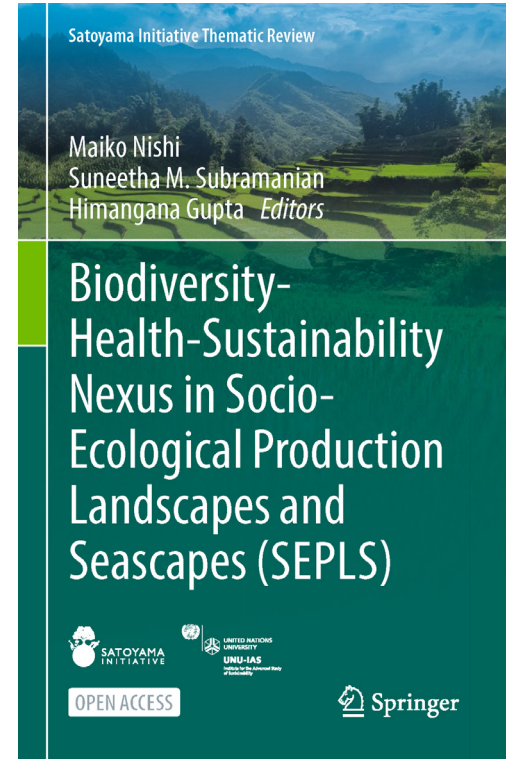
The Satoyama Initiative Thematic Review (SITR) is an annual publication which compiles case studies by IPSI members on timely issues concerning SEPLS and provides recommendations to decision-makers and practitioners.

The publications series began in 2015 and was made possible with the collaboration between UNU-IAS and the Institute for Global Environmental Strategies (IGES) and the financial support from MOEJ. From the sixth volume, SITR was published by Springer Nature Publishing.

- [Biodiversity-Health-Sustainability Nexus in Socio-Ecological Production Landscapes and Seascapes \(SEPLS\)](#)

Volume 7 of SITR is an open-access book that examines the links between biodiversity, health, and sustainability, focusing on how landscape approaches and traditional knowledge can contribute to the sustainable management of natural resources, biodiversity conservation and restoration, and good health for all. It offers insights for the upcoming three-year thematic assessment by the Intergovernmental Science-Policy Platform on Biodiversity and Ecosystem Services (IPBES) on the interlinkages between biodiversity, water, food, and health — known as the nexus assessment.

The book is available as open access. Please go [here](#).



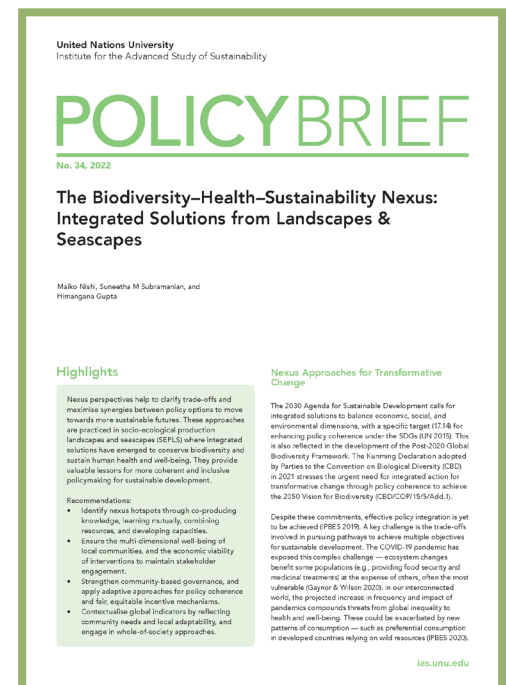
## Policy Briefs

In partnership with its host, UNU-IAS, the IPSI Secretariat published two policy briefs in 2022.

- **Transformative Change for Sustainability: Nurturing Seeds of Change in Socio-Ecological Production Landscapes & Seascapes**

The brief offers recommendations on implementing nexus approaches for transformative change towards sustainability — ways of advancing integrated solutions across multiple sectors. Drawing from strategies used in socio-ecological production landscapes and seascapes (SEPLS), the brief elucidates interlinkages between biodiversity and human well-being to guide policymakers in applying solutions for policy coherence, such as One Health. It is authored by IPSI Secretariat members Maiko Nishi and Suneetha M. Subramanian and UNU-IAS researcher Himangana Gupta.

The policy brief is available for download from UNU Collections. Please go [here](#).





- **Recognising and Supporting the Role of Culture in Effective Area-based Conservation**

This brief offers recommendations on recognising and supporting cultures' role in effective area-based conservation. Other effective area-based conservation measures (OECMs) can achieve positive biodiversity outcomes in a larger area than is covered by protected areas. But this requires OECMs to be better integrated into sustainable production systems in conjunction with protected areas. Good examples of productive social-ecological systems exist. Recognising potential OECMs requires recognising the cultures that make them possible. The brief was authored by William Dunbar, Project Manager from Conservation International, and IPSI Secretariat members Suneetha M. Subramanian and Makiko Yanagiya.

The policy brief is available for download at UNU Collections. Please go [here](#).



## Videos

The IPSI Secretariat produced two videos in 2022 to promote the latest SITR volume and research on integrating landscape approaches into national biodiversity strategies.

- **Integration of Landscape Approaches into NBSAPs**

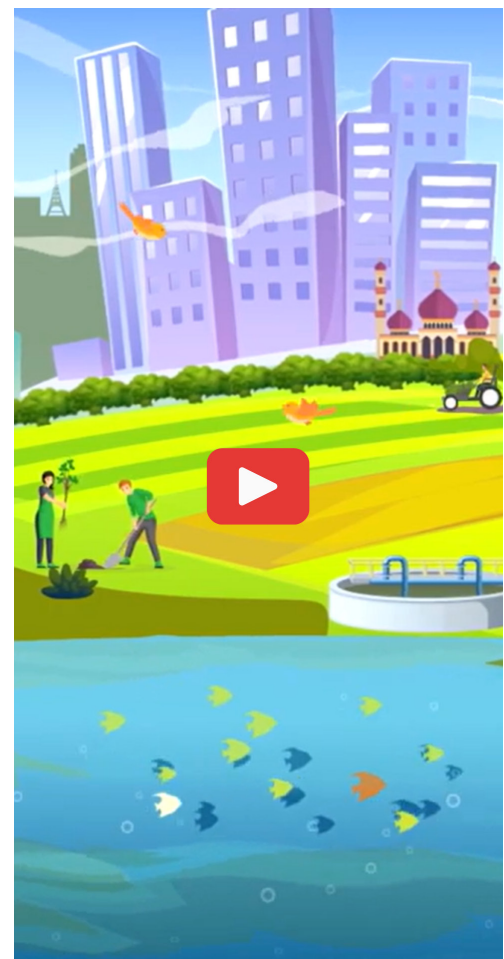
This video offers guidance for policymakers on integrating landscape approaches into National Biodiversity Strategies and Action Plans (NBSAPs) to support decision-makers in developing NBSAPs and enhancing capacity for their implementation. The video complements a manual being developed as part of an IPSI collaborative activity by UNU-IAS and IGES, with the support of SCBD.

Watch the video [here](#).

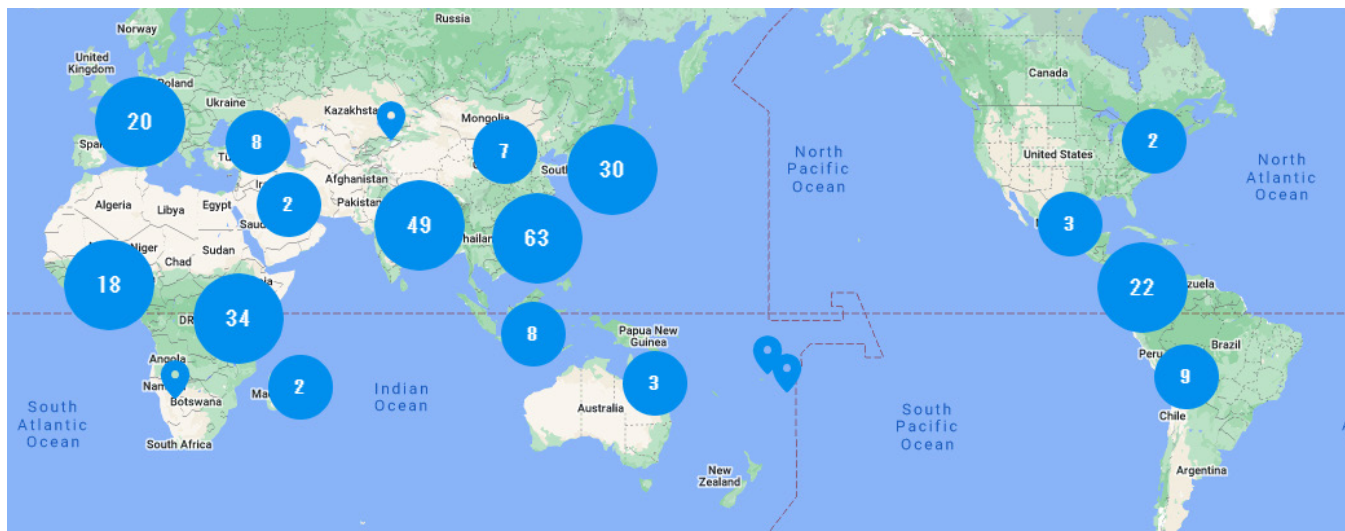
- **Biodiversity, Health, and Sustainability - Examining the Links**

This video introduces the seventh volume of the SITR series, Biodiversity-Health-Sustainability Nexus in Socio-Ecological Production Landscapes and Seascapes (SEPLS), see page 14 for more details. In the video co-authors Patrick Maundu (Honorary Research Fellow, Alliance of Bioersivity International and CIAT) and María Elena Méndez-López (Researcher, CONACYT- CentroGEO) share insights and lessons learned from SEPLS management in Kenya and in Mexico, respectively.

Watch the video [here](#).







## IPSI Case Studies

As of March 2023, 281 case studies are now publicly available on the IPSI website, and this number continues to grow as all IPSI members are expected to submit a case study as part of their membership. Various research activities are also ongoing to synthesize and extract lessons learned and good practices from the case studies.

## Communications and outreach

The IPSI Secretariat updates the IPSI website with publications, news and other relevant resources. The Secretariat also produces newsletters in both [English](#) and [Japanese](#) that now reach over a thousand readers. From January 2022, the IPSI Secretariat made changes to the format and schedule of its newsletters. A mini-newsletter, IPSI Live Updates, was introduced to announce time sensitive events to make sure subscribers do not miss important deadlines. The monthly newsletter was changed to a quarterly schedule to offer more dynamic content to its subscribers.

Go to [satoyama-initiative.org](http://satoyama-initiative.org)



CBD

### New Phase of COMDEKS Local Biodiversity Funding Launched at COP15

At the UN Biodiversity Conference (CBD COP15) in Montreal, the fourth phase of the Community Development and Knowledge Management for the Satoyama Initiative (COMDEKS) was launched.

2022.12.21

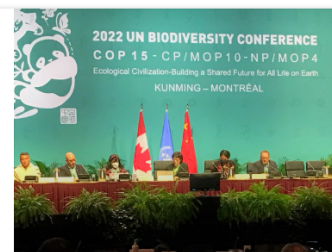


CBD

### COP15 Side Event Promotes Mangrove Restoration and Conservation

On 14 December 2022, UNU-IAS co-hosted a side event at the UN Biodiversity Conference (CBD COP15) in Montreal highlighting challenges and opportunities for mangrove conservation and restoration as a nature-based solution to climate change.

2022.12.15



CBD

### Summit at COP15 Discusses Strengthening the Links Between Nature and Culture

On 12 December 2022, members of the IPSI Secretariat contributed to two sessions of the Nature and Culture Summit held as part of the UN Biodiversity Conference (CBD COP15) in Montreal.

2022.12.13



---

# IPSI STEERING COMMITTEE & SECRETARIAT

---

## IPSI Steering Committee

Meetings of the IPSI Steering Committee were organised in June and February, approving 15 new members and five IPSI Collaborative Activities.

A sub-committee was established to update the partnership's strategy and action plan, with meetings organised to discuss IPSI's role in the new decade. Meetings took place online in June and September October 2022 and the new strategy and action plan will be published in 2023.

The IPSI Secretariat would like to acknowledge the efforts of the continuing IPSI member organisations who offer their time and hard work to serve on the Steering Committee. The IPSI Steering Committee currently consists of 18 member organisations:

- Chair: Ghana National Biodiversity Committee
- Association for the Agroindustry Development in Camana (APAIC)
- Conservation International
- Conservation Solutions Afrika
- Forest Peoples Programme
- Institute for Global Environmental Strategies (IGES)
- Kathmandu Forestry College (KAFCOL)
- Marine Ecosystems Protected Areas (MEPA) Trust
- Ministry of Environment, Cambodia
- Ministry of the Environment, Government of Japan
- Nature and Livelihoods
- Platform for Agrobiodiversity Research (PAR)
- Sabah Biodiversity Centre, Natural Resources Office Sabah, Malaysia
- Secretariat of the Convention on Biological Diversity (SCBD)
- United Nations Development Programme (UNDP)
- United Nations University

- University of Georgia, Department of Geography, Neotropical Montology Collaboratory
- University of Sarajevo, Faculty of Science

## IPSI Secretariat

The IPSI Secretariat continues to be hosted by the United Nations University Institute for the Advanced Study of Sustainability (UNU-IAS) in Tokyo, Japan. Ms. Yoshino Nakahara, Administrative Assistant, and Mr. Bruno Leles, Partnership Associate, departed from UNU-IAS in June and October 2022 respectively. We express our sincere appreciation for their contributions over the past years.

IPSI Secretariat:

- Dr. Tsunao Watanabe, Director
- Ms. Makiko Yanagiya, Deputy Director, Programme Coordinator
- Dr. Maiko Nishi, Research Fellow
- Dr. Suneetha Subramanian, Research Fellow
- Mr. Bruno Leles, Partnership Associate
- Ms. Alexandra Franco Guajardo, Communications Associate
- Ms. Madoka Yoshino, Programme Associate
- Ms. Miyuki Noguchi, Programme Associate
- Ms. Kanako Yoshino, Programme Assistant
- Ms. Yoshino Nakahara, Administrative Assistant

We at the IPSI Secretariat wish to convey our big thanks to all the members for their contributions and continued support made in expanding and strengthening the partnership. We look forward to continuing to work closely with all IPSI partners and friends through 2023 and beyond.



## ANNEX

### LIST OF IPSI MEMBERS AS OF MARCH 2022

Organisation	Location of head office
<b>National governmental organisation</b>	
<b>Number of organisations: 22</b>	
Environment Protection Authority, Yemen	Yemen
Ethiopian Biodiversity Institute	Ethiopia
Ghana National Biodiversity Committee	Ghana
Ministry of Agriculture, Food and Forestry Policies, Italy	Italy
Ministry of Commerce, Industry and Environment, Directorate General for Environment, Timor Leste	Timor-Leste
Ministry of Environment and Forest Resources, Togo	Togo
Ministry of Environment and Protection of Nature, Cameroon	Cameroon
Ministry of Environment and Tourism, Mongolia	Mongolia
Ministry of Environment and Water Resources, Chad	Chad
Ministry of Environment, Cambodia	Cambodia
Ministry of Environment, Ecology and Forests, Madagascar	Madagascar
Ministry of Environment, Gabon	Gabon
Ministry of Environment, Peru	Peru
Ministry of Environment, Republic of Korea	Republic of Korea
Ministry of Forestry and Environment, Gambia	Gambia
Ministry of Forests and Soil Conservation, Nepal	Nepal
Ministry of Natural and Resources and Environment, Thailand	Thailand
Ministry of Natural Resources, Energy and Mining, Malawi	Malawi
Ministry of the Environment, Japan	Japan
National Environmental Council for Sustainable Development, Executive Secretariat, Niger	Niger
National Forest and Wildlife Service (SERFOR), Peru	Peru
National System of Conservation Areas (SINAC), Costa Rica	Costa Rica
<b>Other government affiliated organisation</b>	
<b>(Number of organisations 9)</b>	
Fisheries Research Institute, Council of Agriculture, Executive Yuan	Chinese Taipei
Forestry Bureau, Council of Agriculture, Executive Yuan	Chinese Taipei
Huascaran National Park, National Service of Protected Natural Areas (SER-NANP), Peru	Peru
Institute for Fundamental Researches on Tropical Agriculture (INIFAT)	Cuba
Japan International Cooperation Agency (JICA)	Japan



Kenya Wetlands Biodiversity Research Team (KENWEB)	Kenya
National Herbarium and Botanical Gardens, Malawi	Malawi
Natural Resources Office, Sabah	Malaysia
Soil and Water Conservation Bureau (SWCB), Executive Yuan	Chinese Taipei
<b>Local governmental organisation</b>	<b>Number of organisations: 20</b>
Agriculture Department, New Taipei City Government	Chinese Taipei
Aichi Prefectural Government	Japan
Committee of Intermunicipal Associations of the State of Jalisco (CAIEJ)	Mexico
Echizen City	Japan
Fukui Prefectural Government	Japan
Hawaii State Department of Agriculture	USA
Hualien District Agricultural Research and Extension Station of the Council of Agriculture	Chinese Taipei
Hyogo Prefectural Government	Japan
Ishikawa Prefectural Government	Japan
Kumamoto Prefectural Government	Japan
Liao Ning Province Authority of Liaohe River	China
Liao Ning Province Development & Promotion Center of Liaohe River Reserve	China
Nagoya City	Japan
Nobeoka City	Japan
Secretariat do Infrastructure and Environment – Sao Paulo State Government (SIMA-SP)	Brazil
Taoyuan City Government	Chinese Taipei
Sado City	Japan
Toyooka City	Japan
Wakasa Town	Japan
Yilan County Government	Chinese Taipei
<b>Non-governmental or civil society organisation</b>	<b>Number of organisations: 130</b>
AEON Environmental Foundation	Japan
A Rocha Ghana	Ghana
Accelerated Rural Development Organisation (ARDO)	Ghana
Advocates for Biodiversity Conservation (ABC-Ghana)	Ghana
Amis de l'Afrique Francophone- Bénin (AMAF-BENIN)	Benin
Applied Environmental Research Foundation (AERF)	India
ASEAN Green Justice Network (AGREEN)	Myanmar
Asociación de campesinos vecinos del Parque Natural Nacional Serranía de los Yariguies (ASOCAPAYARI)	Colombia
Asociación para la Investigación y el Desarrollo Integral (AIDER)	Peru
Asociación Pro Desarrollo Agroindustrial de Camana (APAIC)	Peru
Association for the Sustainable Development of Rural San Jose (ADESSARU)	Costa Rica
Association of Forest and Hunting Workers of Serbia – Forest and Hunting	Serbia
Associazione Grani Antichi (Ancient Grains Association) Montespertoli	Italy
Balipara Tract and Frontier Foundation	India



Bhutan Ecological Society	Bhutan
Bioversity International	Italy
BirdLife International	UK
Borneo Conservation Trust Japan	Japan
Bureau for Regional Outreach Campaigns (BROC)	Russia
Center for Green Economy Development – Nepal (CGED – Nepal)	Nepal
CEPA Japan	Japan
Chinese Society for Environmental Education (CSEE)	Chinese Taipei
Circle for Conservation of Natural Resources NGO (ONG CeSaReN)	Benin
Civil Society Organizations’ Network for Sustainable Agriculture and Environment in East Africa (CISONET)	Uganda
Clarendon Parish Development Committee Benevolent Society	Jamaica
Community Agriculture and Environmental Protection Association Cameroon (CAEPA)	Cameroon
Community Based Environmental Conservation (COBEC)	Kenya
Community Entrepreneur Development Institute (CENDI)	Viet Nam
Conservation Alliance International	Ghana
Conservation International	USA
Conservation Solutions Afrika	Kenya
Corporación Ambiental y Forestal del Pacífico (CORFOPAL)	Colombia
Cultivate a Cloud NPO	Japan
Dahari	Comoros
Daluhay	Philippines
Earthwatch Institute, Japan	Japan
EcoAgriculture Partners	USA
Environment and Development Association JASIL	Mongolia
Environment and Rural Development Foundation (ERuDeF)	Cameroon
Environmental Education Centre Zapovedniks	Russia
Environmental Ethics Foundation of Taiwan (EEFT)	Chinese Taipei
Environmental Protection and Conservation Organisation (EPCO)	Mauritius
Environmental Protection Information Centre (EPIC)	Uganda
Farmers’ Seed Network	China
Fondazione Romualdo del Bianco - Life Beyond Tourism	Italy
Forest Peoples Programme (FPP)	UK
Forum for Law, Environment, Development and Governance (FLEDGE)	India
Fostering Education & Environment for Development, Inc. (FEED)	Philippines
Foundation for Research and Social Development (FIDES)	Ecuador
Friends of the Earth Japan (FoE Japan)	Japan
Fuli Farmers Association	Chinese Taipei
Fundación Semillas de Vida, A.C.	Mexico
German Association for Landcare (DVL)	Germany
Global Youth Biodiversity Network	Germany
Grains of Hope Mobilisation (GOHMO)	Malawi
Green Development Advocates	Cameroon

Green Initiative NGO	Mongolia
Green Islands Foundation	Seychelles
Green Movement of Sri Lanka Inc.	Sri Lanka
Green Senegal	Senegal
Greenglobe Ghana	Ghana
Groupe d'Intervention pour l'Encadrement et la Réhabilitation Intégrale (GIERI) / Landcare Network DRC	DR Congo
HATOF Foundation	Ghana
Hokusetsu Satoyama Museum Steering Council	Japan
Hydrology for the Environment, Life and Policy (HELP) Davao Network	Philippines
Initiative for Community Health (INCH)	Malawi
Institute Acao Verde	Brazil
Institute for Societal Advancement	India
Institute for Sustainable Development Strategy (ISDS) Public Foundation	Kyrgyzstan
Institute of Environmental Rehabilitation and Conservation (ERECON)	Japan
International Agency for the Protection of Biocultural Landscapes and for a New Rurality (AGER)	Italy
International Cooperation and Development Fund (ICDF)	Chinese Taipei
International Council for Game and Wildlife Conservation (CIC)	Hungary
International Lake Environment Committee Foundation (ILEC)	Japan
Iwokrama International Centre for Rainforest Conservation and Development	Guyana
Japan Environmental Education Forum (JEEF)	Japan
Japan Habitat Association	Japan
Landcare Association Neumarkt	Germany
Landcare International	Kenya
Live & Learn Environmental Education	Cambodia
M. S. Swaminathan Research Foundation (MSSRF), Community Agrobiodiversity Centre	India
Manna Rural Living Experimental Hub	Chinese Taipei
Marine Ecosystems Protected Areas (MEPA) Trust	Antigua and Barbuda
Mauritania Wildlife Foundation	Mauritius
MELCA - Ethiopia	Ethiopia
Miaoli County Saisiyat Indigenous People Forestry and Worker LLC	Chinese Taipei
Micronesia Conservation Trust	Federated States of Micronesia
Nagenahiru Foundation	Sri Lanka
National Association for the Conservation of Nature (ANCON)	Panama
Nature and Livelihoods	Uganda
Nature Tropicale	Benin
Network for Coexistence with Nature	Japan
Nomi Satoyama Conservation Society	Japan
Ny Tanintsika	Madagascar
Organisation for Community Development (OCD)	Pakistan
Overseas Environmental Cooperation Center	Japan



Pastoralist Economic & Social Advancement (PESA)	Tanzania
Peruvian Association of Bamboo	Peru
Pgakenyaw Association for Sustainable Development (PASD)	Thailand
Platform for Agrobiodiversity Research (PAR)	Italy
Pogany-Havas Association	Romania
Royal Society for Protection of Nature	Bhutan
Satoyama Initiative NGO, Mongolia	Mongolia
Save Aseed For The Future (SAFE)	Uganda
Seeking To Equip People (STEP) Guinee NGO	Guinea
Shumei International	Japan
Social Policy Ecology Research Institute (SPERI)	Viet Nam
Society for Environment Conservation and Agriculture Research and Development (SECARD)	Nepal
Society for Wildlife and Nature (SWAN) International	Chinese Taipei
South Asian Forum for Environment (SAFE)	India
Suganthi Devadason Marine Research Institute (SDMRI)	India
Taiwan Ecological Engineering Development Foundation	Chinese Taipei
Taiwan Landscape Environment Association (TLEA)	Chinese Taipei
Taiwan Wild Bird Federation	Chinese Taipei
Tambo NPO (Rice Paddies Network Japan)	Japan
The Goat Trust	India
The Energy and Resources Institute (TERI)	India
The Nature Conservancy	Australia
Tropical Institute of Ecological Sciences	India
Tropical Science Center	Costa Rica
Tse-Xin Organic Agriculture Foundation	Chinese Taipei
Union of Community Development Volunteers	Uganda
Urato's "Children of the Sea" Revitalizing Project	Japan
VICAM: Vicuñas, Camélidos y Ambiente	Argentina
Vivamos Mejor	Guatemala
Wildlife Conservation Society Madagascar	Madagascar
Wildlife Watch Group	Nepal
World Agroforestry Centre (ICRAF)	Kenya
World Wildlife Fund (WWF) USA	USA
World Wildlife Fund West Africa Programme Office (WWF WAMPO)	Senegal
<b>Indigenous or local community organisations</b>	<b>Number of organisations: 13</b>
Association for Nature and Sustainable Development (ANDES)	Peru
Culture Identity and Resources Use Management (CIRUM)	Viet Nam
Fundacion para la Promocion del Conocimiento Indigena	Panama
Indigenous Knowledge and Peoples Foundation (IKAP)	Thailand
Indigenous Partnership for Agrobiodiversity and Food Sovereignty (TIP)	Italy
Indigenous Peoples' Biocultural Climate Change Assessment (IPCCA)	Peru
Inter Mountain People's Education and Culture in Thailand Association (IMPECT)	Thailand

Kanuri Development Association (KDA)	Nigeria
Nepal Indigenous Nationalities Preservation Association (NINPA)	Nepal
Nirmanie Development Foundation (NDF)	Sri Lanka
Small Actions for Enterprise (SAFE) Ghana	Ghana
Sotz'il	Guatemala
Tebtebba - Indigenous Peoples' International Centre for Policy Research and Education	Philippines
<b>Academic, Educational and / or Research Institute</b>	<b>Number of organisations 59</b>
Agrarian Research Foundation (ARF)	Bangladesh
Akita International University (AIU)	Japan
American Museum of Natural History, Center for Biodiversity and Conservation	USA
An Giang University, Research Center for Rural Development (RCRD)	Viet Nam
Austrian Academy of Sciences, Institute for Interdisciplinary Mountain Research	Austria
Berlin-Brandenburg Academy of Sciences and Humanities, Ecosystem Services Research Group	Germany
Caraga State University, Center for Research in Environmental Management and Eco-governance (CRÈME)	Philippines
Chinese Academy of Science, Centre for Chinese Agricultural Policy	China
Chuo University, Faculty of Science and Engineering, Department of Integrated Science and Engineering for Sustainable Societies	Japan
ERuDeF University Institute of Applied Biodiversity Sciences	Cameroon
Helmholz Centre for Environmental Research (UFZ)	Germany
Ifugao State University	Philippines
Institute for Global Environmental Strategies (IGES)	Japan
Institute of Ecology and Sustainable Development	Russia
Integrated Organic Farming Systems Research Centre (IORC)	Indonesia
International Land Conservation Network	USA
Islands Knowledge Institute (IKI)	Solomon Islands
Jawaharlal Nehru University, School of Environmental Science	India
Kanazawa University	Japan
Kathmandu Forestry College (KAFCOL)	Nepal
Kenya Forestry Research Institute (KEFRI)	Kenya
Laikipia Wildlife Forum	Kenya
Leuphana University Lueneburg	Germany
Lilongwe University of Agriculture & Natural Resources, Department of Forestry	Malawi
Minzu University of China, College of Life and Environmental Science	China
Mokpo National University, Institution for Marine and Island Cultures (MIC)	Republic of Korea
National Dong-Hwa University	Chinese Taipei
National Pingtung University of Science and Technology	Chinese Taipei
National Yunlin University of Science and Technology (YunTech)	Chinese Taipei
Niigata University, Centre for Toki and Ecological Restoration	Japan



Renmin University of China, Centre for Resource and Forestry Policy Study (CFNRPS)	China
Research Centre of the Slovenian Academy of Sciences and Arts (ZRC SAZU)	Slovenia
Royal University of Bhutan, College of Natural Resources	Bhutan
Swedish University of Agricultural Sciences, Swedish Biodiversity Centre	Sweden
Tohoku University, Graduate School of Life Sciences	Japan
Tribhuvan University, Amrit Campus, Institute of Science & Technology	Nepal
Universidade Federal da Fronteira Sul (UFFS)	Brazil
University of Cyprus	Cyprus
University of Development Studies (UDS), Faculty of Renewable Natural Resources	Ghana
University of Georgia, Geography Department, Neotropical Montology Collaboratory	USA
University of Gloucestershire, Countryside and Community Research Institute (CCRI)	UK
University of Hong Kong, Policy for Sustainability Lab of the Faculty of Social Sciences	China
University of Nairobi	Kenya
University of Natural Resources and Life Sciences (BOKU)	Austria
University of San Simón – AGRUCO	Bolivia
University of Santiago de Compostela, Higher Polytechnic School (EPS)	Spain
University of Sarajevo, Faculty of Science	Bosnia and Herzegovina
University of the Philippines Los Baños, College of Forestry and Natural Resources, Department of Social Forestry and Forest Governance	Philippines
University of the Philippines Open University (UPOU)	Philippines
University of the Punjab, Centre for Integrated Mountain Research (CIMR)	Pakistan
University of Tokyo, Graduate School of Agricultural and Life Sciences	Japan
University of Tokyo, Institute for Future Initiatives (IFI)	Japan
University of Vigo	Spain
Unnayan Onneshan	Bangladesh
Vellore Institute of Technology, Vellore	India
Vietnam National University, Hanoi (VNU)	Viet Nam
Yokohama National University	Japan
Yunnan University, National Research Centre for the Studies of the Ethnic Groups of China's South-Western Borderlands (SEGCSWB)	China
Zhejiang A & F University	China
<b>Industry or private sector organisation</b>	<b>Number of organisations: 29</b>
Akita Satoyama Design LLC	Japan
Aleph Inc.	Japan
Asahi Kasei Corporation	Japan
Back to Nature	Nepal
Brother Sales Ltd.	Japan
Canon Inc.	Japan
Chuetsu Pulp & Paper Co., Ltd	Japan
Coelacanth Shokudou. LLC (MUJUN)	Japan

Commemorative Foundation for the International Garden and Greenery Exposition, Osaka, Japan, 1990	Japan
Dell Japan Inc.	Japan
E Overseas Education Centre	Republic of Korea
Frontier Works Inc.	Japan
FRUTA FRUTA Inc.	Japan
Green TV Japan (TREE, Inc.)	Japan
Hewlett-Packard Japan, Ltd.	Japan
IORA Ecological Solutions	India
Kasho Maeno	Japan
LEAF Co., Ltd.	Japan
Lexmark International K.K.	Japan
Node Creative Company	Chinese Taipei
Observer Ecological Consultant	Chinese Taipei
People Empowering & Development Alternatives (PEDA) International	Pakistan
PolisPlan	Australia
Seiko Epson Corporation	Japan
Sumitomo Forestry Co., Ltd	Japan
Taisei Corporation	Japan
The AgriBusiness Group - The New Zealand Sustainability Dashboard	New Zealand
TZR Technology	Malaysia
Yamada Keitei Co., Ltd	Japan
<b>Other</b>	<b>Number of organisations: 2</b>
The Council of Promoting Biodiversity in Rice Paddies Connected to Lake Biwa	Japan
Critical Ecosystem Partnership Fund (CEPF)	USA
<b>United Nations or other Intergovernmental organisation</b>	<b>Number of organisations: 14</b>
Convention on Biological Diversity (CBD) Secretariat	
Global Environment Facility (GEF) Secretariat	
International Centre for Integrated Mountain Development (ICIMOD)	
International Network for Bamboo and Rattan (INBAR)	
International Tropical Timber Organization (ITTO)	
International Union for Conservation of Nature (IUCN)	
Secretariat of the Pacific Regional Environment Programme (SPREP)	
United Nations Centre for Alleviation of Poverty through Sustainable Agriculture (UNCAPSA)	
United Nations Centre for Regional Development (UNCRD)	
United Nations Development Programme (UNDP)	
United Nations Educational Scientific and Cultural Organisation (UNESCO)	
United Nations Environment Programme (UNEP)	
United Nations Environment Programme - World Conservation Monitoring Centre (UNEP-WCMC)	
United Nations University (UNU)	
(Total number of organisations 298)	



---

# ANNEX

---

## EVENTS HISTORY

### 2009

- International Experts Meeting on the Satoyama Initiative Concept (25 July 2009, Tokyo, Japan)
- Asia-Pacific Regional Workshop on the Satoyama Initiative Concept (1–3 October 2009, Penang, Malaysia)

### 2010

- Global Workshop on the Satoyama Initiative (29–30 January 2010, Paris, France)
- CBD SBSTTA 14 and WGRI 3 Side Events “The Satoyama Initiative” (10 and 24 May 2010, Nairobi, Kenya)
- International Partnership for the Satoyama Initiative Preparatory Meeting (23–24 August 2010, Yamanashi, Japan)
- South America Regional Workshop on the Satoyama Initiative and its International Partnership (22 September 2010, Brasilia, Brazil)
- Launch of the International Partnership for the Satoyama Initiative at CBD COP 10 (19 October 2010, Nagoya, Japan)

### 2011

- IPSI-1: The First IPSI Global Conference (10–11 March 2011, Nagoya, Japan)
- CBD SBSTTA 15 Side Event “Challenges and Hopes in Ecosystem Restoration” (8 November 2011, Montreal, Canada)

### 2012

- IPSI-2: The Second IPSI Global Conference (13–14 March 2012, Nairobi, Kenya)
- Rio+20 Side Event “The Satoyama Initiative and the Green Economy” (18 June 2012, Rio de Janeiro, Brazil)
- ISAP 2012 Parallel Session and Expert Workshop “The Satoyama Initiative and Resilience—Pathways to a Sustainable Society” (23–24 July 2012, Yokohama, Japan)
- IUCN World Conservation Congress 2012 Workshop “Enhancing Resilience with Nature: Translating the Science and Practice of Ecosystem Restoration into Policy” (10 September 2012, Jeju, Republic of Korea)
- IPSI-3: The Third IPSI Global Conference (6–7 October 2012, Hyderabad, India)
- CBD COP 11 Side Events “Achievements and Further Development of the International Partnership for the Satoyama Initiative” (11 October 2012, Hyderabad, India)
- CBD COP 11 Side Event “Linking Community and Landscape Resilience” (12 October 2012, Hyderabad, India)

## 2013

- Workshop on Indicators of Resilience in SEPLS (22–24 April 2013, Yokohama, Japan)
- Satoyama Initiative Regional Workshop for Asia (14–15 May 2013, Kathmandu, Nepal)
- ISAP 2013 Parallel Session “Green Economy and Satoyama Initiative: Building Resilient Societies at Local Level” and Expert Workshop (22–24 July 2013, Yokohama, Japan)
- IPSI-4: The Fourth IPSI Global Conference (12–14 September 2013, Fukui, Japan)
- CBD SBSTTA 17 Side Event “An Indicators Approach to Understanding Resilience of Socio-ecological Production Landscapes and Seascapes: a Community-level Perspective” (15 October 2013, Montreal, Canada)
- 9th Pacific Islands Conference on Nature Conservation and Protected Areas Parallel Session “Challenges and Opportunities for the International Partnership for the Satoyama Initiative (IPSI) from Pacific Perspectives” (4 December 2013, Suva, Fiji)

## 2014

- The Satoyama Initiative Regional Workshop for Europe (27–29 May 2014, Florence, Italy)
- ISAP 2014 Parallel Session “Benefits and Challenges of Community Engagement for the Sustainable Use of Biodiversity” and IPSI Case Study Experts Workshop (22–24 July 2014, Yokohama, Japan)
- IPSI-5: The Fifth IPSI Global Conference (4–5 October 2014, Pyeongchang, Republic of Korea)
- CBD COP 12 Side Events “Contribution to the Aichi Biodiversity Targets from the ground up: Engaging diverse communities and perspectives through the Satoyama Initiative” (6 October 2014, Pyeongchang, Republic of Korea)
- CBD COP 12 Side Event “Mobilizing Resources for mainstreaming biodiversity into production landscapes and seascapes” (8 October 2014, Pyeongchang, Republic of Korea)
- IUCN World Parks Congress 2014 Sessions and Side Events (12–19 November 2014, Sydney, Australia)

## 2015

- IPSI Case Study Workshop “Enhancing knowledge for better management of SEPLS” (24–26 June 2015, Tokyo, Japan)
- ISAP 2015 Parallel Session “Contributing to regional sustainability and resilience from SEPLS” (29 July 2015, Yokohama, Japan)
- Satoyama Initiative Regional Workshop for Africa (10–12 August 2015, Accra, Ghana)
- CBD SBSTTA 19 Side Event “Collaborative Resource Mobilization and Knowledge Facilitation through Global Partnership: Activities of the International Partnership for the Satoyama Initiative (IPSI)” (2 November 2015, Montreal, Canada)

## 2016

- IPSI-6: The Sixth IPSI Global Conference (12–14 January 2016, Siem Reap, Cambodia)
- CBD SBSTTA 20 Side Events “Collection and strategic use of knowledge for mainstreaming biodiversity into various sectors” (26 April 2016, Montreal, Canada)
- CBD SBI 1 Side Event “Strategic actions to enhance implementation of the CBD: recent experiences of the International Partnership for the Satoyama Initiative in Africa and Asia” (3 May 2016, Montreal, Canada)
- IPSI Case Study Workshop “Incorporating concepts and approaches of socio-ecological production landscapes and



---

seascapes (SEPLS) into policy and decision-making” (25–27 May 2016, Tokyo, Japan)

- Satoyama Initiative Regional Workshop for Latin America and the Caribbean (27–29 June 2016, Cusco and Pisac, Peru)
- ISAP 2016 Parallel Session “Integrated landscape management: Effective approaches for translating knowledge into transformative actions” (13 July 2016, Yokohama, Japan)
- IUCN World Conservation Congress 2016 Sessions (1–5 September 2016, Honolulu, USA)
- IPSI Steering Committee Eleventh Meeting (12–13 November 2016, Takarazuka, Hyogo, Japan)
- CBD COP 13 Side Events “Strategic Action for Mainstreaming Biodiversity: Contributions of the International Partnership for the Satoyama Initiative (IPSI) to Biodiversity and Human Well-Being” (6 December 2016, Cancun, Mexico)
- CBD COP 13 Side Event “Contributions of funding mechanisms under the Satoyama Initiative to mainstreaming biodiversity for well-being” (8 December 2016, Cancun, Mexico)

## 2017

- COMDEKS Global Knowledge Exchange Workshop (23–26 January 2017, San José, Costa Rica)
- Satoyama Initiative Regional Workshop in Sabah (18–20 April 2017, Kota Kinabalu, Malaysia)
- IPSI Case Study Workshop “Livelihoods and socio-ecological production landscapes and seascapes (SEPLS)” (28–30 June 2017, Tokyo, Japan)
- ISAP 2017 Parallel Session “Putting sustainability at the heart of landscape and seascape management: Key roles played by subnational and local governments” (26 July 2017, Yokohama, Japan)
- IPSI Steering Committee Twelfth Meeting (2–4 October 2017, Kanazawa, Ishikawa, Japan)
- CBD SBSTTA 21 Side Event “Integrated Landscape Management in the UN Decade of Biodiversity 2010–2020 and Beyond: Achievements and Future Direction of the International Partnership for the Satoyama Initiative (IPSI)” (11 December 2017, Montreal, Canada)

## 2018

- IPSI Case Study Workshop “Sustainable use of biodiversity in socio-ecological production landscapes and seascapes (SEPLS) and its contribution to effective area-based conservation” (22–24 May 2018, Tokyo, Japan)
- CBD SBSTTA 22 Side Events “Can a landscape approach bridge livelihood, science, and conservation? The Satoyama Initiative and the science-policy interface” (5 July 2018, Montreal, Canada)
- CBD SBI 2 Side Event “Financing Landscape Management Approaches: Replication and Upscaling for Biodiversity and Sustainable Development” (10 July 2018, Montreal, Canada)
- CBD SBSTTA 22 and SBI 2 Side Events “Mainstreaming Biodiversity in Production Landscapes and Seascapes: Integrated Approaches in Design and Implementation of National Biodiversity Strategies and Action Plans (NBSAPs)” (12 July 2018, Montreal, Canada)
- ISAP 2018 Parallel Session “Sustainable Production Landscapes and Seascapes for Biodiversity, Human Livelihoods and Well-being” (19 July 2018, Yokohama, Japan)
- IPSI Steering Committee Thirteenth Meeting (29–30 September 2018, Kanazawa, Ishikawa, Japan)
- IPSI-7: The Seventh IPSI Global Conference (29 September–2 October 2018, Kanazawa, Japan)
- CBD COP 14 Side Events “Socio Ecological Production Landscapes and Seascapes for Biodiversity and Livelihood: Roles in Post 2020 Global Biodiversity Framework” (17 December 2018, Sharm El Sheikh, Egypt)
- CBD COP 14 Side Event “Consolidation and Replication of Effective Landscape Approaches for Biodiversity

Conservation and Human Livelihoods" (19 November 2018, Sharm El Sheikh, Egypt)

## 2019

- Regional Consultation Workshop on the Post-2020 Global Biodiversity Framework for Asia and the Pacific Side Event "Multi-stakeholder partnership to enhance landscape and seascape approaches for biodiversity conservation and human livelihood" (29 January 2019, Nagoya, Japan)
- IPSI Case Study Workshop "Understanding the multiple values associated with sustainable use in socio-ecological production landscapes and seascapes (SEPLS)" (28-30 May 2019, Tokyo, Japan)
- High level Political Forum on Sustainable Development 2019 Side Event "Satoyama Initiative – Society in harmony with Nature: An inclusive approach for Communities on Landscapes and Seascapes" (15 July 2019, New York, USA)
- IPSI Steering Committee Fourteenth Meeting (2 September 2019, Kumamoto, Japan)
- IPSI-8: The Eighth IPSI Global Conference and Expert Thematic Workshop on Landscape Approaches for the Post-2020 Global Biodiversity Framework (2-6 September 2019, Kumamoto, Japan)
- CBD SBSTTA-23 Side Event "Outcomes of the Expert Thematic Workshop on Landscape Approaches for the Post-2020 Global Biodiversity Framework" (27 November 2019, Montreal, Canada)

## 2020

- "Informal meeting on landscape and seascape approaches and their relevance to the post-2020 global biodiversity framework" held on the margin of the CBD Second meeting of the Open-ended Working Group on the Post-2020 Global Biodiversity Framework. (23 February 2020, Rome, Italy)
- Comparative & International Education Society (CIES) Annual Conference Session "Generating transformative change through reframing education within and beyond school settings" (8 April, Online)
- IPSI Steering Committee Meeting (May 2020, email-based)
- IPSI Case Study Workshop 2020 "Transformative change through the multiple benefits of socio-ecological production landscapes and seascapes (SEPLS)" (22-26 June 2020, Online)
- UN High-Level Political Forum on Sustainable Development (HLPF) 2020 Side Event "Satoyama Initiative – Societies in Harmony with Nature: An inclusive approach for communities, landscapes and seascapes" (16 July 2020, Online)
- CBD Thematic Consultation on Sustainable Use of Biological Diversity for the Post-2020 Global Biodiversity Framework (27 July- 8 October, Online)
- Biodiversity Summit (30 September 2020, Online) Video Message by the Director of UNU-IAS
- Global Landscapes Digital Conference Session: "Seizing the landscape opportunity to catalyse transformative biodiversity governance" (29 October 2020, Online)
- International Forum for Sustainable Asia and the Pacific (ISAP) 2020 Thematic Track Session "The Satoyama Initiative, transformative change, and societies in harmony with nature" (12 November 2020, Online)
- IPSI Steering Committee Meeting (December 2020, Online)

## 2021

- CBD Informal Session for the 24th Meeting of the Subsidiary Body on Scientific, Technical and Technological Advice (SBSTTA-24) (17-26 February 2021, Online)
- CBD Informal Session for the 3rd Meeting of the Subsidiary Body on Implementation (SBI-3) (8-14 March 2021, Online)
- IPSI Steering Committee Subsidiary Meeting (March 2021, Online)



- UNU-IAS OUIK webinar: The Coastal Seascapes We Want! – Voices of Women Scientists in Ocean Research (17 May 2021)
- IPSI Case Study Workshop 2021 “The nexus between biodiversity, health, and sustainable development in managing socio-ecological production landscapes and seascapes (SEPLS)” (28-30 June 2021, Online)
- IPSI Steering Committee (July 2021, Email-based)
- UN High-Level Political Forum on Sustainable Development (HLPF) 2021 Side Event “Satoyama Initiative – Healthy Planet, Healthy People: Role of Satoyama Initiative for Green and Blue Recovery” (9 July 2021, Online)
- IPSI Sub-committee First Meeting on Strategy and Plan of Action (24 September 2021)
- IPSI Sub-committee Second Meeting on Strategy and Plan of Action (1 December 2021)
- International Forum for Sustainable Asia and the Pacific (ISAP) 2021 Thematic Track Session “Landscape Approaches for Biodiversity, Climate Change and Sustainable Development Co-benefits” (2 December 2021, Online)
- IPSI Steering Committee Meeting (14 December 2021, Online)

## 2022

- First Symposium on Community-based Activities and Governance for Seascape Restoration (9 February 2022, Online)
- Experts Dialogue "Making OECMs Work: Landscape Approaches for Effective Area-based Conservation" (25 February, Online)
- 1st Ifugao Rice Terraces Assessment International Summit 2022 (18 - 29 March 2022, Ifugao State University, Philippines and Online)
- CBD WG2020-3 Side Event “Mainstreaming Landscape Perspectives Into the Post-2020 Global Biodiversity Framework” (17 March 2022, Geneva, Switzerland and Online)
- CBD SBI-3 Side Event “Integrating landscape approaches into National Biodiversity Strategy and Action Plans (NBSAPs)” (18 March 2022, Geneva, Switzerland and Online)
- CBD SBSTTA-24 Side Event “Making OECMs Work: Production Landscapes for Effective Area-based Conservation” (24 March 2022, Geneva, Switzerland and Online)
- Virtual consultation workshop on a draft manual on the application of landscape approaches in the updating and implementation of NBSAPs (25-26 April 2022, Online)
- “Strengthening Interlinkages Amongst Biodiversity, Health, and Well-being in SEPLS” (27 April 2022, Online)
- International Day for Biological Diversity 2022 Symposium “Building a Shared Future for All Life” (20 May 2022, Online)
- IPSI Case Study Workshop 2022 “Ecosystem restoration through managing socio-ecological production landscapes and seascapes (SEPLS)” (30 May -1 June 2022, Online)
- IPSI Sub-committee Third Meeting on Strategy and Plan of Action (13 June 2022, Online)
- IPSI Steering Committee Meeting (June 2022, email-based)
- CBD OEWG 4 (21-26 June 2022, Nairobi, Kenya and online)
- UN High-Level Political Forum (HLPF) 2022 Side Event “The Satoyama Initiative and Building Back Better” (13 July 2022, Online)
- Climate & SDGs Synergy Conference Side Event “Catalysing Nature-based Solutions for Biodiversity, Climate Change and Sustainable Development through Ecosystem Restoration” (20 July 2022, Tokyo, Japan and Online)
- Second Symposium on Community-based Activities and Governance for Seascape Restoration (20 September 2022, Tokyo, Japan and Online)
- IPSI Sub-committee Fourth Meeting on Strategy and Plan of Action (4 October 2022, Online)
- Seminar on International Partnership for the Satoyama Initiative (IPSI) "Montology Palimpsest: The New Geographies of

---

Mountain Conservation" (11 November 2022, Tokyo, Japan)

- ISAP 2022 Thematic Track Session "Transformative Actions for a Nature-positive Society from SATOYAMA Initiative towards 2030" (2 December 2022, Online)
- CBD COP15 Side Events "The Satoyama Initiative: A Decade of Working for Societies in Harmony with Nature", "Exploring nature positive pathways", "Nature-based Solutions to climate change and other social challenges by conservation and restoration of mangrove ecosystem, focusing on its multiple services" and "COMDEKS Phase 4: Contribution of the Satoyama Initiative to the Post-2020 GBF" (7, 8, 14 and 16 December 2022, Montreal, Canada)
- CBD COP15 Side Event "The Satoyama Initiative: A Decade of Working for Societies in Harmony with Nature" (7 December 2022, Montreal, Canada)
- CBD COP15 Side Event "Exploring nature positive pathways" (8 December 2022, Montreal, Canada)
- CBD COP15 parallel event "OECMs and green economies: Productive landscapes for nature-positive society" (8 December 2022, Montreal, Canada)
- CBD COP15 parallel event "IPSI 10th Anniversary Evening Cocktails" (10 December 2022, Montreal, Canada)
- CBD COP15 Side Event "Nature-based Solutions to climate change and other social challenges by conservation and restoration of mangrove ecosystem, focusing on its multiple services" (14 December 2022, Montreal, Canada)
- CBD COP15 Side Event "COMDEKS Phase 4: Contribution of the Satoyama Initiative to the Post-2020 GBF" (16 December 2022, Montreal, Canada)

## **2023**

- SDM Inception Workshop (30 January 2023, Online)
- IPSI Steering Committee Meeting (3 and 28 February 2023, Online)



For more information visit the IPSI website  
and the official IPSI social media:

[satoyama-initiative.org](http://satoyama-initiative.org)

Or contact the IPSI Secretariat:  
[isi@unu.edu](mailto:isi@unu.edu)

The IPSI Secretariat is hosted by the United Nations University Institute for the Advanced Study of Sustainability (UNU-IAS), and its activities are made possible through the financial contribution of the Ministry of the Environment, Government of Japan.



SATOYAMA  
INITIATIVE



UNU  
IAS